

# Drilling. Doweling. Everything under control.

**HOMAG**

**Our CNC-Drilling and Dowel Inserting Machine**  
DRILLTEQ D-200

**YOUR SOLUTION**







# Drilling and doweling – and always keeping a tight grip on everything.

Whether as individual machine or complementary product in connection with a CNC processing center – the DRILLTEQ D-200 has two tasks: horizontal drilling and doweling. And that makes the machine more efficient than ever before.

## YOUR SOLUTION

### MORE: HOMAG.COM

---



DRILLTEQ D-200

---

## CONTENTS

- 04 Highlights
- 06 Standards
- 07 tapio
- 08 Hardware – Software
- 09 Everything at a glance
- 10 Life Cycle Services
- 11 Technical Data



#### High-speed doweling and drilling unit

- For precise processing while drilling and doweling horizontally

**1** 1 spindle individually selectable  
(DRILLTEQ D-200/Models 1 + 2)

**2** 3 spindles individually selectable  
(DRILLTEQ D-200/Models 3 + 4)



## The highlights at a glance:

- **Incredibly fast...**

High-speed drilling and dowel insertion aggregate for accurate drill holes and precise positioning of dowels

- **Keeping a tight grip...**

By using up to 8 clamping cylinders, adjustable to length and thickness, any workpiece is held firmly

- **Beneficial...**

The lowerable center stop allows for flexible handling of workpieces thereby ensuring an optimum two-field operation

- **Established all over the world...**

The powerful HOMAG Group software woodWOP

	Length of the processing field		Drilling gear		Control of the axes		
	1,250 mm	2,800 mm	Horizontal with 1 spindle	Horizontal with 3 spindles	X	Y	Z
DRILLTEQ D-200/Model 1	✓	–	✓	–	CNC	manual	manual
DRILLTEQ D-200/Model 2	–	✓	✓	–	CNC	manual	manual
DRILLTEQ D-200/Model 3	✓	–	–	✓	CNC	CNC	CNC
DRILLTEQ D-200/Model 4	–	✓	–	✓	CNC	CNC	CNC



### Low-pressure glue pump

- Double membrane pump, low-noise level and compact



### Vibrating conveyor

- For automatic and reliable feed of standard dowels with dimensions 8x30 mm or 8x35 mm
- Other dowel dimensions on request



### Mobile control panel

- For maximum comfort

## All inclusive – Hardware

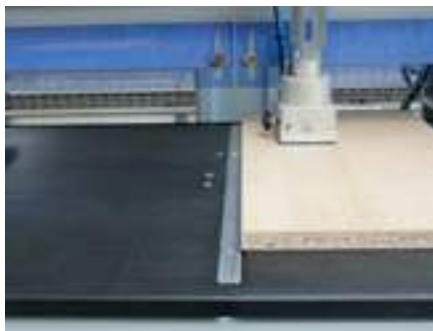
**WITH THE DRILLTEQ D-200 YOU ARE PROVIDED WITH TOP-QUALITY EQUIPMENT FROM THE VERY BEGINNING.**

Excellent processing quality is guaranteed in the long term by including fundamental technology already in the standard.



### Adjustable clamping cylinders

- Up to 8 adjustable clamping cylinders enable a secure and gentle fixing of the workpieces



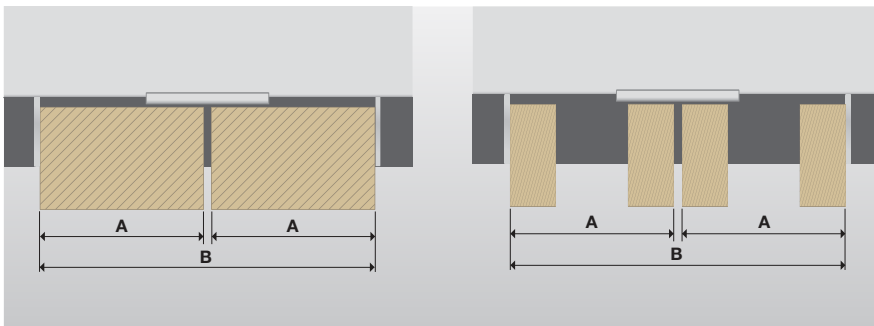
### Center stop

- For flexible handling of workpieces
- Pneumatically lowerable
- Picture right: Active center stop



### Lateral stops

- Pneumatically lowerable
- Allows the placement of workpieces > 1,250 mm (or 2,800 mm)



### Alternate operation

- Depending on the workpiece dimensions the DRILLTEQ D-200 machines can be fed with up to 4 workpieces
- DRILLTEQ D-200/Models 1 + 3: **A:** 600 mm | **B:** 1,250 mm
- DRILLTEQ D-200/Models 2 + 4: **A:** 1,380 mm | **B:** 2,800 mm

# Apps that make working life easier.

**tapio**  
Partner

## DataSave

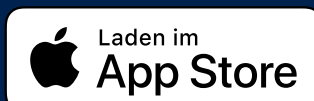
- Protects machine and configuration expertise
- Faster service for machine breakdowns
- Saves time when restarting production
- Saves on maintenance costs
- Automatic backups of several machines

## ServiceBoard

- Create service cases quickly and easily and send them to the correct service partner
- Live video diagnostics to solve service cases with image support
- Video reduces the language and distance barriers
- Also works without a machine connection to tapio (and is therefore ideal for older machines)

## MachineBoard

- Push notifications
- Machine data and status can be viewed from anywhere in real time
- Lists of errors, warnings, maintenance tasks and actions
- Displays the remaining time until the next intervention by the machine operator



**Free demo for all tapio apps, no registration required. Simply download and test.**

## tapio is the open wood industry ecosystem

This means that everyone involved in the wood industry can participate.  
Because together with our business partners, we develop digital solutions for everyone.

Currently available in the EU and Switzerland

(Due to the fast pace of the IT-landscape, the compatibility to the tapio platform is warranted for five years.)

# Hardware – Software

**WITH THIS SOFTWARE PACKAGE YOU ARE »READY TO RACE«.** You will receive one of the most established CNC programming systems, the woodWOP software, which has proven itself by more than 40,000 installations worldwide.



## Machine operation

- Modern and simple control of the machine functions
- TFT-Display
- Provision of teleservice capability
- USB frontside bus
- Ethernet connection 10/100 Mbit

## woodWOP

- Worldwide established CNC programming system – already more than 40,000 installations
- More safety and control in programming by 3D-presentations of all relevant elements

## Everything at a glance...

	Length of the processing field		Drilling gear		Control of the axes					
	1,250 mm	2,800 mm	Horizontal with 1 spindle	Horizontal with 3 spindles	X axis	Y axis	Z axis	Doweling unit	Gluing unit	Cleaning device for glue injector
DRILLTEQ D-200/Model 1	✓	-	✓	-	CNC	manual	manual	✓	✓	✓
DRILLTEQ D-200/Model 2	-	✓	✓	-	CNC	manual	manual	✓	✓	✓
DRILLTEQ D-200/Model 3	✓	-	-	✓	CNC	CNC	CNC	✓	✓	✓
DRILLTEQ D-200/Model 4	-	✓	-	✓	CNC	CNC	CNC	✓	✓	✓



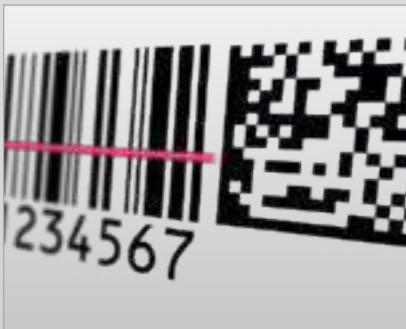
## Please use our website!

Worldwide largest forum  
for woodWOP:  
[forum.homag.com](http://forum.homag.com)



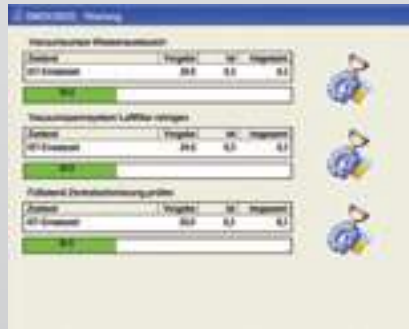
### Further software options

- woodWOP for external PC
- woodAssembler



### Barcode connection (optional)

- Barcodescanner / -software
- Supported barcodes:  
1D – Barcode, 2D – Data Matrix Code
- Every workpiece is exactly identified for the further workpiece flow



### Machine Data Recording

- Collecting and evaluating machine states via time meter and event meter



### tapio-ready

- Simply “connect” the machine with tapio to use all innovative digital tapio products
- The free use of tapio MachineBoard is included in the standard

### Features

Vibrating conveyor	Low-pressure glue pump	tapio-ready	Glue flow control	Pneumatic feed throttle for the drilling feed	Barcode reading system	X-measuring system	Air-conditioning	Special dimensions of the dowels	Add. dowering aggregate	Add. dowering chamber	Add. vibrations conveyor
✓	✓	✓	○	○	○	○	○	○	○	○	○
✓	✓	✓	○	○	○	○	○	○	○	○	○
✓	✓	✓	○	○	○	○	○	○	○	○	○
✓	✓	✓	○	○	○	○	○	○	○	○	○

Standard: ✓

Option: ○



For you more than...

**1,350**

service employees worldwide

**90 %**

less on-site service thanks to  
successful remote diagnosis

**5,000**

customer training sessions per / year

**150,000**

machines, all electronically documented  
in 28 different languages – in eParts

## **HC** LIFE CYCLE SERVICES

Optimal service and individual consultations are included in the purchase of our machines. We support you with service innovations and products which are especially tailored to your requirements. With short response times and fast

customer solutions we guarantee consistently high availability and economical production – over the entire life cycle of your machine.



### REMOTE SERVICE

- Hotline support via remote diagnosis by our trained experts regarding control, mechanics and process technology. Thus, more than 90% less on-site service required and consequently a faster solution for you!
- The ServiceBoard App helps to solve tasks in a fast, simple and concrete way. This is achieved by mobile live video diagnosis, automatic sending of service requests or the online spare parts catalog eParts.



### SPARE PARTS SERVICE

- High spare parts availability and fast delivery.
- Ensuring quality by predefined spare parts and wear parts kits, comprising original spare parts.
- Identify and inquire for spare parts online under [www.eParts.de](http://www.eParts.de) 24/7, or buy even faster and more comfortably in the new HOMAG Webshop eCommerce.



### FIELD SERVICE

- Increased machine availability and product quality by certified service staff.
- Regular checks through maintenance / inspection guarantee the highest quality of your products.
- We offer you the highest availability of technicians in order to reduce downtimes in case of unpredictable troubles.

# Technical Data



Picture shows the  
DRILLTEQ D-200/Model 1

TECHNISCHE DATEN		DRILLTEQ D-200 Models 1 + 3	DRILLTEQ D-200 Models 2 + 4
Workpiece length	mm	20–1,250	20–2,800
Workpiece width	mm	20–800	20–800
Workpiece thickness	mm	10–60	10–60
Compressed air connection	inch	R 1/2"	R 1/2"
Compressed air	bar	min. 7	min. 7
Total connected voltage	kW	ca. 4,5	ca. 4,5
Extraction connection	mm	1 x Ø 80	1 x Ø 80
Extraction speed	m/sec.	30	30
Supply voltage	A	10	10
Total machine weight	kg	approx. 1,100	approx. 2,200
Installation dimensions			
L	mm	2,260 (2,560*)	3,810 (4,120*)
W	mm	1,450	1,450
H	mm	1,760	1,760

\* Width incl. control panel

## **HOMAG Group AG**

info@homag.com

www.homag.com



## **YOUR SOLUTION**