

Efficiency through planning.

HOMAG

Software

Cut Rite cutting optimization software

YOUR SOLUTION





Cut Rite – the optimization software for efficient cutting processes

The Cut Rite optimization software is used by thousands of companies, with more than ten thousand users located in over 70 countries. The name says it all: Cut Rite transforms slow panel cutting into a more efficient process that saves time and reduces wastage, saving a lot of money. The software offers compatibility with a vast range of machines from sliding table saws and CNC beam saws to routers and machining centers. At the heart of Cut Rite is its powerful optimization engine which has been developed and fine-tuned over the past 35 years. Above and beyond the features already included as standard, a number of add-on modules allow you to enhance the scope of Cut Rite still further.

YOUR SOLUTION

CONTENTS

- 04 Process integration
- 06 Data consistency
- 10 Top features
- 16 Modules
- 20 What's included

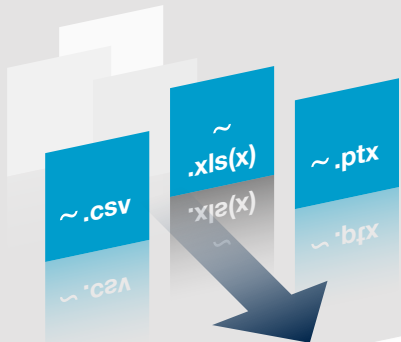
Perfectly integrated in the overall process

Clearly structured and easy to use – that's Cut Rite's formula for your success. Cut Rite includes all the features that are important for your day-to-day work. On top of this, you can add further modules and increase the number of licenses. Another great benefit is that you can automate many steps, thus reducing manual operation to a minimum.



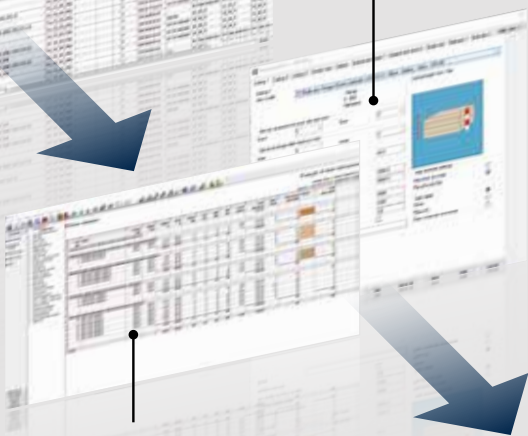
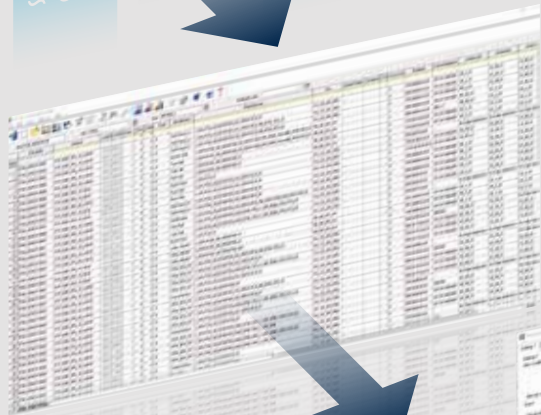
Industry-standard software

Cut Rite is compatible with all common industry solutions. Parts list tables in PTX, CSV or XLS format can be transferred with all information at the touch of a button.



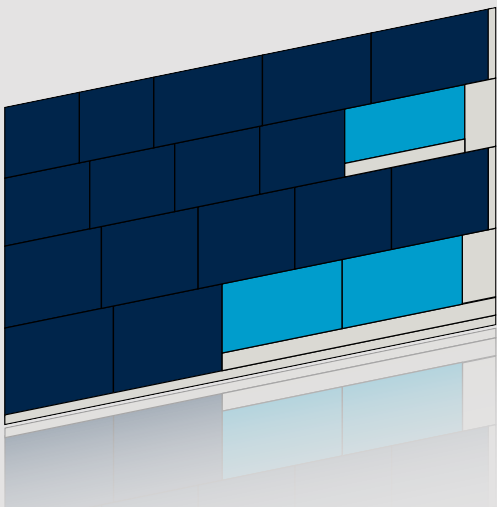
Customized parameters

You set the standards for your cutting process, not the software! Detailed parameter settings allow you to align the optimization results to your specific manufacturing process. All configuration options are graphically visualized and so easy to find and use. An intelligent, user-friendly Help system also provides support.



Tailored reporting

Reporting options can be configured to your requirements and all the results clearly portrayed. Key figures are instantly available.



Nesting



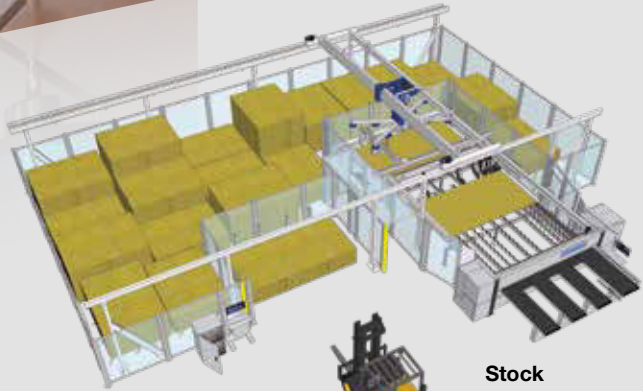
Labeling



Analog



Online



Stock



Saw

Saw? Nesting? Both? No problem!

Cut Rite gives you the flexibility to choose, because it is able to supply both cutting systems with data concurrently. Cut Rite recognizes from the parts lists which machine you want to use and generates the appropriate data. You can create the contour elements for each part as MPR file (e.g. with woodWOP), use DXF data, or program them directly in Cut Rite. If only rectangular parts are to be cut on a saw or CNC machine, a simple parts list without individual part programs is sufficient.

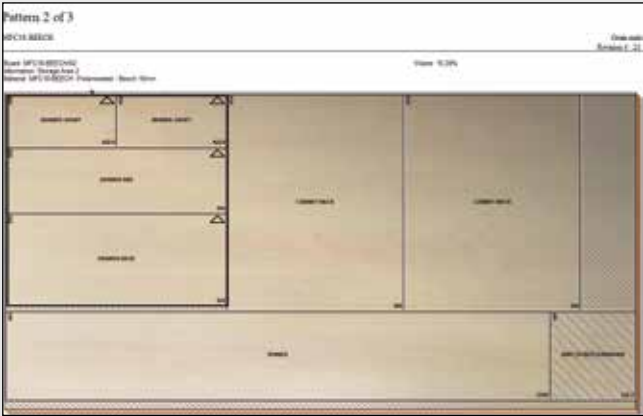


Top features for your manufacturing process

We support you with a team of developers and support technicians to ensure that Cut Rite puts you one step ahead. Our update and service contracts give you access to all the latest features, allowing you to extend your lead. Training for you is provided by us or by certified partners. This shortens the start-up phase.

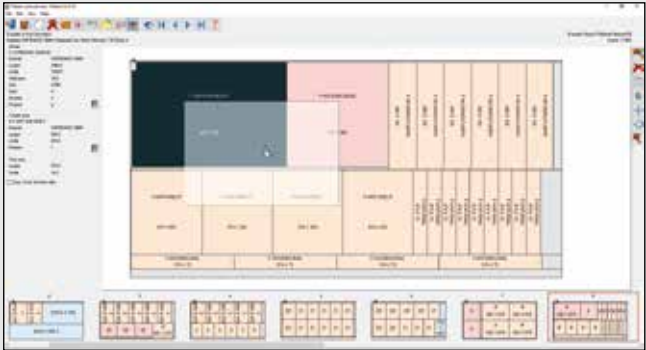


Top features



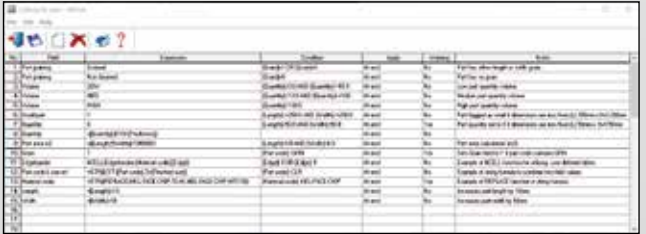
Grain matching

Templates define the position of parts in the cutting pattern – either in order to achieve a uniform veneer pattern or to group narrow parts before edging.



Graphic cutting pattern editor

With other programs, you have to start again from the beginning if there is a change to the parts list, or if you want to cut an optimized pattern differently. With Cut Rite, you simply grab the mouse and enter the changes directly in the cutting pattern in a matter of seconds.



Rules editor for cutting lists

This editor allows you define rules for data handling and for automatic generation of data specifically to suit your manufacturing process. Key figures can then be calculated fully automatically in an instant.

The algorithm: default fast

Cut Rite's calculating engine uses all your computer's processors. This increases the number of computer operations, achieving optimum results very quickly.

Job costing						
Code	Description	Quantity	Linear	Area	Cost	Total
Board						
	Material	Quantity		Area	Cost/m²	Total
HASCOHSC-BUM-01	HASCOHSC-BUM 2400 8 x 1200 0	7		20.838	0.000	18.541
MED CHP-TRUM-01	MED CHP-TRUM 2400 8 x 1200 0	70		86.172	0.000	209.206
CHPCHARD-TRUM-01	CHPCHARD-TRUM 2400 8 x 1200 0	75		84.652	2.550	171.723
MEL-CHP-TRUM-01	MEL-CHP-TRUM 2400 8 x 1200 0	75		55.616	3.783	177.240
MEL-CHP-TRUM-02	MEL-CHP-TRUM 2400 8 x 1200 0	75		6.865	3.760	18.486
		40		173.777		305.771
Edging						
	Description	Quantity			Cost/m	Total
18-3-PVC-25MM	18-3-PVC Type 25mm	54.770			0.150	82.155
*EAK-FAPR	*Eak PVC Type 25mm	70.620			0.565	63.657
		180.390				145.812
Operation						
	Description	Minutes			Cost per hour	Total
Saw		1.48			50.000	59.917
Machining centre		5.25			62.000	274.275
Ecogelander		0.52			30.000	26.106
						359.498
Total						1058.240

Top features

CNC processing and linking: fast setup of your CNC machines

Use this top feature to streamline your production into a seamless, highly efficient and accurate process. It creates a fully integrated manufacturing cell by downloading part drawings directly to your point-to-point machining center. Parts are labeled at the saw. The label includes a bar code for the drawing reference. Scanning at the machining center provides a foolproof and fast process that ensures each part is machined correctly.

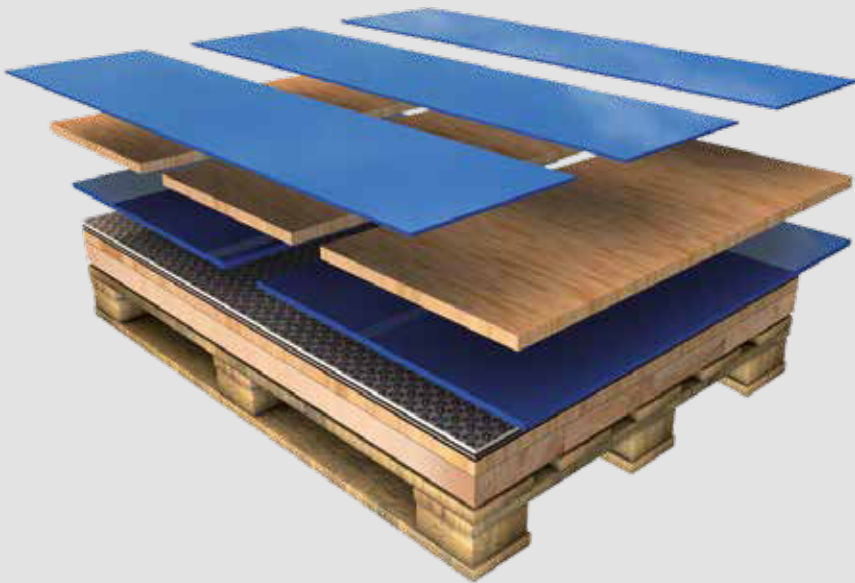


Features and benefits

- The geometry for rectangular or shaped parts can be drawn quickly using the editor, or can be imported from DXF files.
- The machining library holds parametric drawings so that, as the part size changes, the machining instructions are recalculated instantly.
- This top feature offers support for drilling, grooving, contour routing, operations on both sides of part, vacuum pod positions, dimension lines and pockets.
- Details of depths and tooling information can be added for each operation, including tool speeds, tool path compensation and other tool-specific data.
- The machining interface allows direct transfer of data to most CNC-controlled machining centers via DXF and proprietary formats.
- Labels or route sheets can include the part drawing.
- Machining times can be estimated for each part.
- If used alongside woodWOP, all MPR programs can be used and data from them transferred to the CNC machine.

Destacking*: for efficiency and fast throughput

The top feature “destacking” rationalizes throughput at the saw by planning the destacking process and thus keeps production running smoothly. It gives you a list of pallet requirements or a baseboard cutting list and, based on the size of your mechanized destacking stations, will limit the number of open parts. This ensures that finished items go to the assembly department as quickly as possible.



Features and benefits

- A station report provides information for conveying parts to the correct pallets or baseboards in the destacking area.
- A cutting list for baseboards is calculated from the part sizes allowing for oversize allowance, layout constraints and maximum stacking height.
- A destacking summary shows the operator, pattern by pattern, on which pallet each part must be placed.
- The layout of parts on each pallet or baseboard can be downloaded to automatic destacking equipment.
- Labels can be printed for stacks or pallets.
- Cut Rite professional includes an advanced optimizing algorithm which obeys maximum station sizes when allocating parts to stations.

*Only with Cut Rite professional

Top features

Part library and label printing: for better management and tracking of parts

This feature helps you gear up for production faster by instantly generating data for all your most frequently used parts. Simply by using just the part codes to pull items into a parts list, you can enter cutting lists quickly and accurately and create factory route cards at the press of a button, speeding up production.

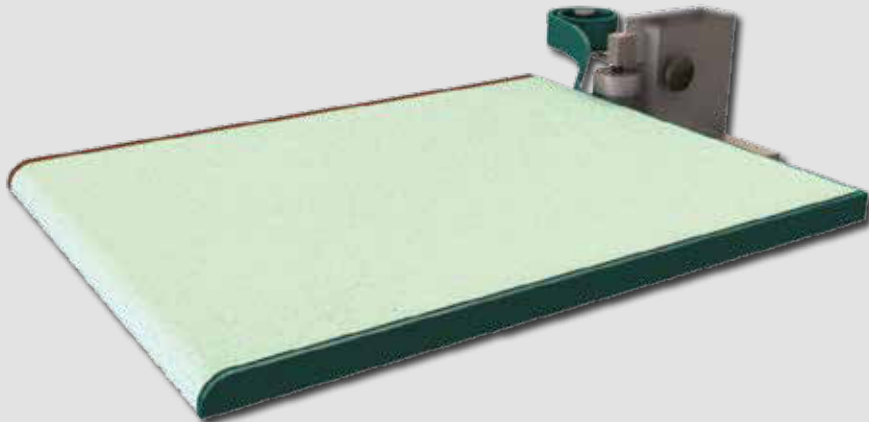


Features and benefits

- The part library can hold details of size, material, grain and edging, as well as plenty of user-defined information for each part.
- You can generate detailed labels with multiple bar codes and graphics – for fast setup of CNC machines equipped with bar code scanners.
- The library can also hold a list of regularly used hardware components with their costs.
- The part dimensions and other fields may be parametric and specified at order entry if required.
- Labels can be printed in the office in the sequence of cutting or directly at the machine.
- A list of operation times can be held for each part and be used to build up a full part cost.

Edging and laminate calculation: provides precise calculation of edging and laminate requirements

This feature processes all part measurements in a single step, making your planning a lot easier. Taking the edging into account, it corrects the cut sizes and calculates the sizes and amounts of laminate and edging material required. The graphic corner joint information on the label ensures that edging is applied correctly.



Features and benefits

- The edging library holds description, thickness and cost of all edging and laminating materials.
- The edging summary lists the running meters of edging required and the costs of all the materials.
- Laminate size calculations can include allowances and special calculations for post-formed edges.
- If you use a production cell, all the edging data can be transferred to the edge bander by bar code.
- You get precise details of processing times and costs for single or double sided edge banders.
- The corner joint information provides details of how the corners of parts are be treated, for example, mitered, overlapped or rounded.

Even more possibilities – with powerful add-on modules

Would you like to benefit from other Cut Rite advantages in addition to the actual optimization? Then the following add-on modules are just what you need. Take a look for yourself and discover the possibilities.



Modules

Order processing and variable parts lists: for fast response to inquiries and orders

This module helps you create quotations and process orders quickly and easily. The parametric product library allows Cut Rite to detail every order, including all standard or custom products, parts, hardware and operations. You will only need to enter your data once to produce order acknowledgments, dispatch notes, invoices and a complete calculation of all costs.

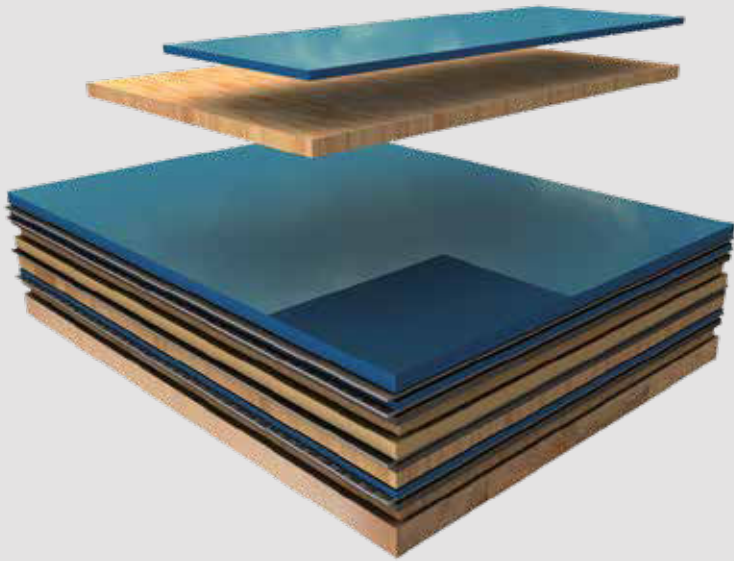


Features and benefits

- Customer database with full contact details, invoicing address, multiple delivery addresses, discounts and free-format notes fields.
- User-defined product 'variables' take account of order-based requirements such as material color and thickness, and hardware options.
- Flexible form designer allows tailor-made documents to include company logo, graphics and bar codes with full control of font and positioning.
- Use of formulae and user-defined tables enables automatic calculation of component sizes for special cabinets, and allows parametric pricing.
- You can attach image files (BMP, EMF ...) or use Cut Rite's own drawing library to add drawings to your product catalog.
- At the touch of a button, you can obtain a picking list with the calculation of sundry part sizes such as solid lipping or bought-out items.

Stock control: for accurate and efficient inventory management

This invaluable module protects your profit margin by minimizing downtime caused by lack of stock. How? By helping you accurately track your raw materials and by adding offcuts back to stock. This ensures no reusable material is wasted, so you systematically increase material yield. Panels can be allocated to jobs in advance so that you do not optimize the same offcut on different jobs.



Features and benefits

- This module helps you check stock levels, record raw material orders and book in receipts from your suppliers.
- It considers available free stock (physical stock less allocations) and automatically adjusts stock after cutting.
- Configurable reports include stock valuation, minimum stock levels, monthly summary of stock usage and an audit trail of all stock movements.
- It automatically updates both core material and laminate stock when you laminate complete panels prior to cutting.
- Physical stock control of fittings and edge banding material – only when used in conjunction with the add-on module "order processing and variable parts lists".
- Interface to automatic storage handling systems for synchronization of panel and offcut stock via SQL Server database.

Which Cut Rite edition is right for you?

CUT RITE	advanced	professional	nesting
PARTS LIST			
Metric or imperial (inch) dimensions	✓	✓	✓
Grain lengthwise / crosswise / none	✓	✓	✓
Exact quantities or over/under production	✓	✓	✓
Maximum number of part sizes per parts list	20,000	20,000	20,000
Unlimited number of materials per list	✓	✓	✓
Configurable information boxes	99	99	99
Configurable list view	✓	✓	✓
IMPORT			
Import of parts lists / cutting lists from CSV or Excel XLS(X)	✓	✓	✓
Import of board lists from CSV or Excel XLS(X)	✓	✓	✓
CUTTING LIST			
Configurable rules for cutting lists and board lists	✓	✓	✓
Different panel dimensions and quantities per optimization	✓	✓	✓
OPTIMIZATION			
Small / medium quantity optimizer	✓	✓	✓
Cross cuts only optimizer (worktops etc.)	✓	✓	
Large quantity optimizer		✓	✓
Optimization with automatic over production		✓	✓
Free cut optimization		✓	
Optimization with priorities		✓	✓
Parameters for cutting pattern complexity	✓	✓	✓
Parameters for saw blade / router and trim cuts	✓	✓	✓
Settings for combiTec and HOMAG recuts unit		✓	
Strip sorting for Power Concept		✓	
Settings for flexTec		✓	
Waste optimization	✓	✓	✓
Total costs optimization (material and cutting)		✓	
Extended computing time and advanced options		✓	
Open stacks limit		✓	
Optimization with parts groups		✓	
Maximum number of part dimensions per optimization	10,000	10,000	10,000
Maximum number of parts per optimization	10,000	any	any
Batch optimization up to 250 lists	✓	✓	✓
Material and panel-dependent parameters	✓	✓	✓
Templates for continuous grain pattern	✓	✓	✓
EXPORT			
Export summaries to Access	✓	✓	✓
Export summaries to Excel XLS(X)	✓	✓	✓
Export summaries to PDF	✓	✓	✓
Export cutting patterns to DXF	✓	✓	✓

CUT RITE	advanced	professional	nesting
SUMMARIES, LABELS AND FORMS			
Batch and run summaries	✓	✓	✓
Parts, boards, material and cutting pattern summaries	✓	✓	✓
Offcuts summary	✓	✓	✓
Weight calculation	✓	✓	✓
Graphs and charts	✓	✓	✓
Configurable summaries	✓	✓	✓
Form designer for parts lists and cutting patterns	✓	✓	✓
Label designer for texts, bar codes and graphics	✓	✓	✓
Labels for parts and offcuts	✓	✓	✓
EDGING AND LAMINATING			
Calculation of unprocessed panel dimensions, cutting sizes and finished sizes	✓	✓	✓
Calculation of edging lengths in meters or units	✓	✓	✓
Graphic display of edging sequence	✓	✓	✓
Calculation of processing time for edging	✓	✓	✓
Determination of quantities and sizes of laminate	✓	✓	✓
Calculation of costs for edging and laminate	✓	✓	✓
Edging and laminate library	✓	✓	✓
STOCK			
Board library for unprocessed panels and offcuts	✓	✓	✓
Automatic stock issue optimization	✓	✓	✓
Import of stock adjustment via file	✓	✓	✓
CUTTING PATTERNS			
Graphic cutting pattern preview	✓	✓	✓
Cutting pattern display with color palette or material grain	✓	✓	✓
Cutting pattern editor – manual amendment of cutting patterns	✓	✓	✓
Cutting pattern and template library	✓	✓	✓
Cutting instructions for saw operator	✓	✓	
OTHER FUNCTIONS			
File management – copying and deleting data	✓	✓	✓
Backup and recovery	✓	✓	✓
Integrated help	✓	✓	✓
Link to website / display of available updates	✓	✓	✓
User profiles	✓	✓	✓
Stand alone batch operation (external call-up of functions)	✓	✓	✓
TRANSFER TO SAW			
Calculation of cutting time	✓	✓	
Interface – single saws	✓	✓	
Interface – angular saw units / multiple saw systems		✓	
Interface – CNC machines			✓
Transfer parameters	✓	✓	✓
Saw interface – PTX format	✓	✓	✓
Stress elimination cuts	✓	✓	

HC LIFE CYCLE SERVICES

Optimal service and individual consultations are included in the purchase of our machines. We support you with service innovations and products which are especially tailored to your requirements. With short response times and fast

customer solutions we guarantee consistently high availability and economical production – over the entire life cycle of your machine.



REMOTE SERVICE

- Hotline support via remote diagnosis by our trained experts regarding control, mechanics and process technology. Thus, more than 90% less on-site service required and consequently a faster solution for you!
- The ServiceBoard App helps to solve tasks in a fast, simple and concrete way. This is achieved by mobile live video diagnosis, automatic sending of service requests or the online spare parts catalog eParts.



SPARE PARTS SERVICE

- High spare parts availability and fast delivery.
- Ensuring quality by predefined spare parts and wear parts kits, comprising original spare parts.
- Identify and inquire for spare parts online under www.eParts.de 24/7, or buy even faster and more comfortably in the new HOMAG Webshop eCommerce.



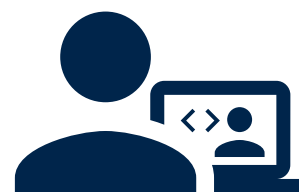
MODERNIZATION

- Keep your machinery up to date and increase your productivity as well as your product quality. This is how you can meet tomorrow's requirements today!
- We support you with upgrades, modernization as well as individual consultancy and developments.



DIGITAL SERVICES

- ISN (intelliServiceNet) – The new remote service solution of the future! Fast restart of production because the remote service employee has extensive access to relevant physical data.
- intelliAdvice App – provides help for self-help. The preventive solutions proposed in the new App are the combination of our experiences and existing machine data.



SOFTWARE

- Telephone support and consultancy through software support.
- Digitalization of your sample parts via 3D scanning saves time and money compared to new programming.
- Subsequent networking of your machinery with intelligent software solutions ranging from construction to production.



FIELD SERVICE

- Increased machine availability and product quality by certified service staff.
- Regular checks through maintenance / inspection guarantee the highest quality of your products.
- We offer you the highest availability of technicians in order to reduce downtimes in case of unpredictable troubles.



TRAINING

- Thanks to training perfectly suited to your requirements, your machine operators can optimally operate and maintain the HOMAG machines.
- Training also includes customer-specific training documents with exercises proven in practice.
- Online training and webinars. Learn without traveling, meet your trainer in the digital classroom.



For you more than...

1,350

service employees worldwide

90%

less on-site service thanks to successful remote diagnosis

5,000

customer training sessions per / year

150,000

machines, all electronically documented in 28 different languages – in eParts

HOMAG Group AG

info@homag.com
www.homag.com



YOUR SOLUTION